



INTERNATIONAL PROGRAMMES



**UNIVERSITY OF APPLIED
SCIENCES AND ARTS**

STUDY IN BELGIUM

BRUGES



GHENT

ANTWERP



BRUSSELS



LEUVEN



LIÈGE



PXL UNIVERSITY OF APPLIED SCIENCES AND ARTS

WELCOME TO PXL!

- A young dynamic and vibrant organisation
- A centre of expertise for innovation, creativity and entrepreneurship
- A long and strong international tradition
- 10000 students
- 9 departments / faculties
- 5 campuses in Hasselt and Diepenbeek
- In the heart of Europe
- Close to Brussels, the decision centre of Europe



HASSELT



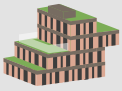
MAASTRICHT (NL)

Studying at PXL equals

- Practice-oriented study programmes: you acquire knowledge and develop skills that are crucial in your future job
- A competency based education system
- A strong focus on IT in education
- Student centred and interactive teaching methods, case studies, projects, ...
- Good and respectful contact between students and teaching staff
- International modules and courses taught in English
- Language courses and welcome activities for international students
- Excellent student services: housing service, bicycle rent, sports facilities, job service for students, student catering, ...

**CAMPUS
VILDERSTRAAT**

**CAMPUS
ELFDE LINIE**



MEDIAHUIS

KANALKOM

P15

LOMMEL
EINDHOVEN

SINGEL



CORDA CAMPUS

P6

PXL

P3

PXL

P4

VERSUZ

P7

STATION
HASSELT

DIEST
LEUVEN



VOERRELENNING
HASSELT

GROENE BOULEVARD
DUSART

P1

P2

PXL

P5

PROVINCIEHU

KLEINE RING (DOORSNEDEN 800 M)

P8

ST. TRUIDEN
NAMEN

TONGEREN
LUIK

**CAMPUS
GUFFENSLAAN**



PXL HEALTHCARE

PXL

P9

STUDENT SERVICES

Housing service

The PXL housing service assists you in finding a room at a reasonable price on the private market. Note that PXL doesn't have own student residences.

Laptop service

The PXL laptop service assists students with configuring their laptops, e-mail settings and technical problems.

Student catering

PXL offers student catering on our campuses.

Bike rental

Cycling is the ideal way of travelling around Hasselt and Diepenbeek. Students can rent a bike for €25 per year.

Campus Pass

With a campus pass (€ 25) students can travel by bus in Hasselt and between Hasselt and the Campus in Diepenbeek. The campus pass is valid for one year.

Contact

Studentservices@pxl.be



ALBERTKANAAL

EMER

UIS



KINERPOLIS

ARE



FIND OUT MORE!

www.pxl.be/international
> International students

CAMPUS DIEPENBEEK



PXL GREEN & TECH

DIEPENBEEK >
GENK

UNIVERSITEITSLAAN

N702

DIEPENBEEK

STATION DIEPENBEEK



A

P12

P11

P10

BUS 50

BUS 52

BUS 50

BUS 52

HASSELT

HASSELT

DEGREE PROGRAMS

All programs are taught in Dutch except when indicated by 'English Program'.

PXL-BUSINESS

PROFESSIONAL BACHELOR

- **Business Management (allround)**
- **Business Management**
 - Accountancy-Taxation
 - Finance and Insurance
 - Supply Chain Management
 - Marketing
 - Paralegal Studies
- **Organisation & Management**
 - Business & Languages
 - Business Translation & Interpreting
 - Health Care Management

ASSOCIATE DEGREES

- **Accounting administration**
- **Legal Administrative Support**
- **Marketing- and communication Support:**
 - Communicational support
 - Marketing support
- **Sales support**
- **Transport and Logistics**
 - Warehouse Management
 - Road Transport
- **Traffic engineering and mobility**
- **Shop Management**

PXL-DIGITAL

PROFESSIONAL BACHELOR

- **Electronics - ICT**
- **Applied Computer Science:**
 - Application-development
 - Artificial Intelligence
 - Software-management
 - System and Network Management

ASSOCIATE DEGREES

- **Digital Design**
- **System and Network Administration**
- **Internet of things**
- **Computer Programming**

PXL-EDUCATION

BACHELOR OF EDUCATION

- **Pre-Primary Education**

- **Primary Education**
- **Secondary Education**
- **Shortened Bachelor program for Secondary Education**

ASSOCIATE DEGREES

- **Associate degree of education: secondary education**

PXL-GREEN & TECH

PROFESSIONAL BACHELOR

- **Agro- en biotechnology:**
 - Biotechnology
 - Greenery Management
- **Construction**
- **Electromechanics**
 - Electromechanics Allround
 - Heating, Ventilation, Airconditioning and Cooling
 - Industrial Maintenance

ASSOCIATE DEGREES

- **Building and Construction Drafting**
- **Electromechanical Systems**
 - Measurement and control techniques
 - Maintenance techniques
- **Renewable energy systems**
- **HVAC systems**
 - Air conditioning systems
 - Heating and sanitary installations
- **Construction site organisation**
 - Road construction
 - Housing construction

PXL-HEALTHCARE

PROFESSIONAL BACHELOR

- **Occupational Therapy**
- **Nursing**
- **Midwifery**

ASSOCIATE DEGREE

- **Nursing (PIVH)**

PXL-MAD SCHOOL OF ARTS

BACHELOR AND MASTER OF ARTS

- **Visual Arts**
 - Graphic Design

-
- Jewellery Design, Gold- and Silversmithing
 - Fine Arts
 - **Educational Master of Arts in Visual & Audiovisual Arts**
 - **Master of Arts in Visual Arts (English Program)**
 - Graphic Design
 - Jewellery Design, Gold- and Silversmithing
 - Fine Arts

PXL-MEDIA & TOURISM

PROFESSIONAL BACHELOR

- **Communication**
 - Commercial communication
 - Public relations en Information
- **International Communication Management (English program)**
 - Commercial Communication
 - Public Relations and Information
- **Journalism**
- **Tourism and Leisure Management**

PXL-MUSIC

PROFESSIONAL BACHELOR

- **Pop and Rock Music**
 - Music Performance
 - Music Technology
 - Music Management

PXL-PEOPLE & SOCIETY

PROFESSIONAL BACHELOR

- **Social Work**
 - Social Work and Social Care
 - Social Work and Human Resources
- **Applied Psychology**
 - Occupational and organizational psychology
 - Clinical psychology
 - School and educational psychology

ASSOCIATE DEGREE

- **Social Educational Assistance**



ENGLISH TAUGHT DEGREE PROGRAMMES

MASTER IN VISUAL ARTS

The department PXL-MAD School of Arts offer an artistic English Master Programme in Visual Arts (60 ECTS).

- Jewellery Design & Gold and Silversmithing
- Graphic Design
- Fine Arts
- MASieraad



FIND OUT MORE!

www.pxl-mad.be/en
> Master Programme



BACHELOR IN INTERNATIONAL COMMUNICATION MANAGEMENT

The first two years Dutch is the teaching language. The third year of the Bachelor of International Communication Management is taught entirely in English (60 ECTS). International students who don't know any Dutch can enrol for the third year only, provided they already have a degree.



FIND OUT MORE!

www.pxl.be/international > International students > Programmes > Degree programmes



EXCHANGE PROGRAMMES

PROGRAMMES FOR EXCHANGE STUDENTS

Department	Study Programme	Autumn	Spring
PXL BUSINESS	Business Management	●	
PXL DIGITAL	Electronics-ICT	●	●
	Applied Information Technology		●
PXL EDUCATION	Teacher Education	●	
PXL HEALTHCARE	Midwifery	●	●
	Nursing	●	●
	Occupational Therapy	●	●
PXL  SCHOOL OF ARTS	Visual Arts - Bachelor	●	●
	Visual Arts - Master	●	●
PXL MEDIA & TOURISM	Communication Management and Journalism	●	●
	Tourism and Leisure Management	●	
PXL MUSIC	Music Performance	●	●
	Music Technology	●	
	Music Management	●	●
PXL PEOPLE & SOCIETY	Social Work	●	
PXL GREEN & TECH	Biotechnology	●	●
	Greenery Management	●	●
	Construction	●	●
	Electromechanics	●	●



CHECK THE COURSES FOR EACH PROGRAMME ON

www.pxl.be/international-exchange



CHECK THE APPLICATION PROCEDURE ON

www.pxl.be/international

STUDY LOAD AND ECTS CREDITS

- A full time programme consists of 30 ECTS for one semester and 60 ECTS credits for a whole academic year.
- 1 ECTS credit corresponds to 25 to 30 working hours, all included (attending classes, working an studying at home, passing exams, ...).

APPLICATION EXCHANGE PROGRAMMES

NOMINATION AND APPLICATION

The student's home university must send an official nomination to PXL. Nominated students will receive information about the application procedure. The application documents consist of:

- Application form
- Course selection* or uploaded Learning agreement (LA) signed by home institution
- Possible additional documents. Check the programme information.

*For institutions connected to the Erasmus Without Paper (EWP) network, we will check and sign the digital LA upon reception through EWP.

COURSE CATALOGUE

The course catalogue is available on www.pxl.be/international-exchange. You can't combine courses from different programmes. A minimum of 24 ECTS should be selected each semester (except for internship students).

DEADLINES

Nominations must be send by:

- 15/05 for students applying for the Autumn semester
- 15/10 for students applying for Spring semester

The application should be finished by:

- 01/06 for students applying for the Autumn semester
- 01/11 for students applying for the Spring semester

KNOWLEDGE OF ENGLISH

We expect bachelor students to have level B1 and master students to have level B2 in English, according to the European Framework of Reference.



INTERNATIONAL RELATIONS OFFICE

PXL University of Applied Sciences & Arts - Hogeschool PXL

Elfde-Liniestraat 23 - Building D, B-3500 Hasselt, Belgium

www.pxl.be/international • international@pxl.be • incoming@pxl.be